

SILK LAUNDRY

NATURE ' S

LABORATORY

RELEASE
ONE

004.23

LETTER FROM KATIE

I was trying to describe recently how I came up with collections. I don't yet have an absolute answer to this, but I described it as something akin to how an oyster forms a pearl. A foreign substance slips into the shell of the oyster, which causes irritation. When this happens the oyster produces nacre to cover the foreign substance to protect itself. This defence mechanism, in time, becomes a pearl. Something similar happens to me; it could be the smallest bit of information that hits me, and I suddenly become obsessive about gaining knowledge in a particular field.

One of these obsessions is the Amazon - the lungs of the earth. The Amazon rainforest is fascinating, but it always seemed inaccessible and slightly anxiety-inducing. In many areas in South America, it is advised to exercise caution and not travel within 20 km of the Colombian border due to high crime rates. This is precisely where I wanted to go. There is political unrest, and many environmental activists have lost their lives. It's never crossed my mind that I could go and see it for myself till this year.

I put my reservations aside and travelled to the Amazon rainforest in Ecuador, very close to the border of Columbia, with Esther Martinez, our Art Director and my very close friend. It was a trip of a lifetime that took both courage and strength. We trekked in muddy overgrowth with holes in our boots, swung on vines and used the pheromones from ants as a natural bug repellent. The sheer size of the orchids and leaves alone look like they only belong in storybooks. We saw pink dolphins, green frogs, monkeys and tarantulas. Turtles, Blue morpho butterflies and, to the best of my knowledge, even saw Psychotria Elata, aka Hot lips plant, which is now endangered due to habitat loss. Hot Lips features in this collection, Nature's Laboratory. I consider it the catalyst that started this collection - or for the purpose of this letter, the foreign substance that created a pearl...



DISCOVER

THE NATURAL

WORLD

IN

ANOTHER

LIGHT.

004.23

A collection inspired by the Amazon – the lungs of the Earth. Nature's Laboratory is an homage to nature as it occurs, embodying its ever-changing colours and moods in a new light.



SHORT SLEEVE BOYFRIEND SHIRT & BIAS CUT PANTS JAGUARS BLACK



CLIP SILK SHORT SLEEVE BOYFRIEND SHIRT & BIAS CUT PANTS.

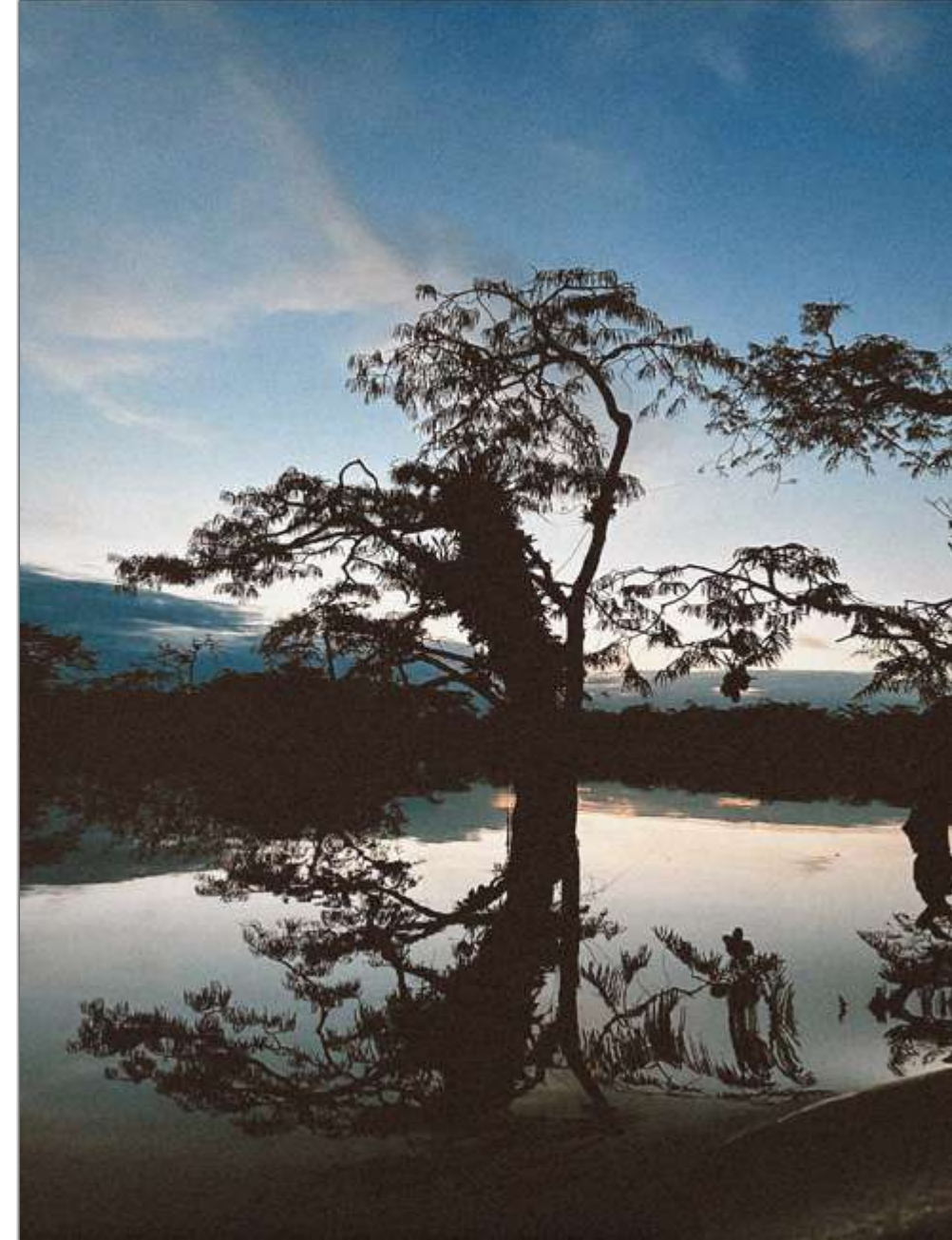
(shown on Larissa) SHORT SLEEVE BIAS DRESS JAGUARS BLACK (shown on Noah) SHORT SLEEVE BOYFRIEND SHIRT, TWILL RACER SHORTS JAGUARS BLACK & VIRGIN ALPACA KNIT CREWNECK BLACK.



HEAVY SILK CDC SHARP COLLAR MIAMI BLAZER BLACK, TWIST TOP DARK EARTH & CDC PLEATED PANTS.



BIG LAGOON, ECUADOR. MARCH 2023.



"This collection is about making memories, facing fears, and choosing to live adventurously. It also highlights the importance of biodiversity and the people who dedicate their lives to preserving it..."

- KATIE KOLODINSKI

CROCHET CROPPED CARDIGAN CACAO & HEAVY SILK CDC LONG SUIT SKIRT CUB.



CROCHET GRANDPA SHIRT BLACK & BIAS CUT PANTS JAGUARS BLACK.



SILK TWILL BOYFRIEND SHIRT &
SLOUCH PANTS DANDELION STRIPE.

LONG SLEEVE MESH TOP BLACK, HEAVY SILK CDC VEST & LONG SUIT SKIRT CUB.



LONG SLEEVE MESH TOP BLACK & HEAVY SILK CDC LONG SUIT SKIRT CUB.

(shown on Noah) SHORT SLEEVE BOYFRIEND SHIRT & SILK TWILL RACER SHORTS JAGUARS BLACK.
(shown on Larissa) HEAVY SILK CDC SHARP COLLAR MIAMI BLAZER CUB, SILK JERSEY TANK & SILK TWILL SLOUCH SHORTS CACAO.





LUCIFER TITI MONKEY, ECUADOR. MARCH 2023.

"... I would like you to hold a space for the environmental activists and indigenous people who have lost their lives or have been imprisoned for fighting for justice."

- KATIE KOLODINSKI

BIAS CUT CAMI & LONG BIAS CUT SKIRT JAGUARS BLACK.



TWILL MIAMI BLAZER, SLOUCH PANTS CACAO & HEAVY SILK CDC SHORT SLEEVE BOYFRIEND SHIRT CUB.



(left) HALTER DRESS JAGUARS BLACK (right) 90's SLIP DRESS JAGUARS BLACK.



SILK TWILL SLOUCH PANTS CACAO & HEAVY SILK CDC SHORT SLEEVE BOYFRIEND SHIRT CUB.



HEAVY SILK CDC CARRIE DRESS & SHARP COLLAR MIAMI BLAZER CUB.



SILK RELAXED BLAZER & BIAS CUT PANTS CACAO.

THE BIG 'G' CARDIGAN CREAM, HEAVY SILK CDC SHORT SLEEVE BOYFRIEND SHIRT & BIAS BUT PANTS.



Timeless silhouettes and innovative designs emerge in fabrications like Silk Cotton Crochet, Silk Mesh, Silk Jersey, and Virgin Alpaca, mimicking the textural diversity of nature through new versatile designs that stand out.

COTTON SILK CROPPED LONG SLEEVE SHIRT LAVENDER & SILK TWILL SLOUCH SHORTS CACAO.



COTTON SILK LONG SLEEVE
ROUND SHIRT LAVENDER &
SILK TWILL SLOUCH PANTS
DANDELION STRIPE.



COTTON SILK CROPPED CAMP SHIRT & 80'S SKIRT DARK EARTH.



CROPPED CAMP SHIRT DARK EARTH.

SILK JERSEY TANK
LAVENDER & SILK
Twill SLOUCH PANTS.



SILK JERSEY TANK LAVENDER, SILK TWILL BOYFRIEND SHIRT & SLOUCH
PANTS CACAO.

VIRGIN ALPACA KNIT
CREWNECK LAVENDER & SILK
JERSEY LONG SLEEVE DRESS.





SILK JERSEY LONG SLEEVE DRESS LAVENDER.



VIRGIN ALPACA CREWNECK KNIT & SILK JERSEY LONG SLEEVE DRESS LAVENDER.

SIENNA DRESS CACAO.



SILK JERSEY DRESS LAVENDER.



SEARCHING FOR AN ANACONDA, ECUADOR. MARCH 2023.

New colourways like Fudge, Dandelion and Garnet capture the way colour travels gradually through nature, from the warmest tones to the deepest magenta.

DECO ROULEAU DRESS
DANDELION.

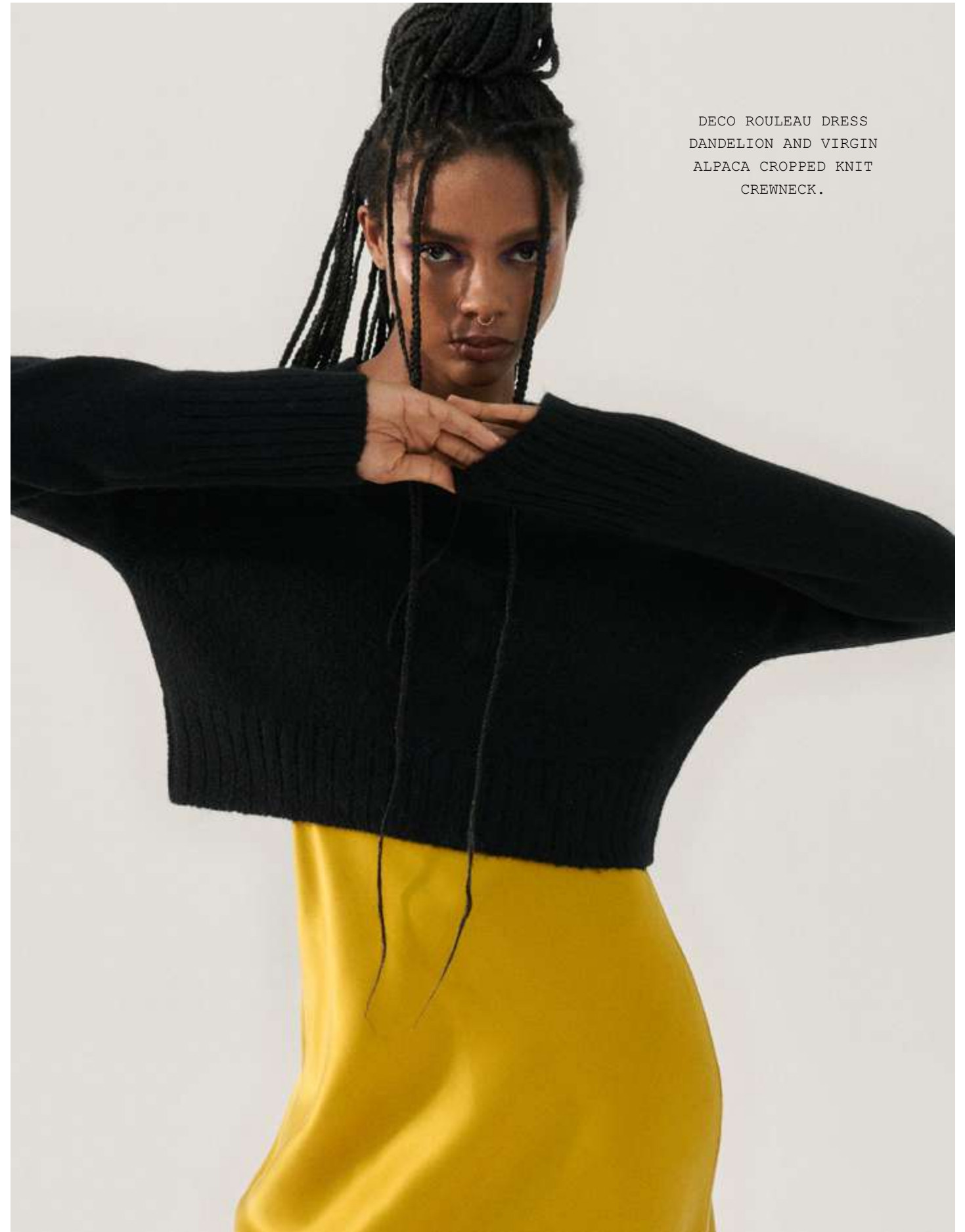


STELLA DRESS
CACAO.



SILK JERSEY TANK & SILK TWILL RACER DANDELION STRIPE.

JERSEY TANK BLACK, CROCHET GRANDPA SHIRT CACAO & SILK TWILL RACER SHORT DANDELION STRIPE.



DECO ROULEAU DRESS
DANDELION AND VIRGIN
ALPACA CROPPED KNIT
CREWNECK.

The inspiration offered by nature is endless. Through this collection, we share our interpretation of its offerings through new exclusive designs and limited-edition prints that capture nature in all her glory.

STELLA DRESS DANDELION.





SILK TWILL BOYFRIEND SHIRT, SLOUCH VEST & RACER SHORTS CACAO.



SHORT SLEEVE BOYFRIEND SHIRT CACAO & HEAVY SILK CDC BIAS CUT PANTS.



SIENNA DRESS CACAO.

HEAVY SILK CDC LONG SUIT SKIRT BLACK.



DECO ROULEAU DRESS
LAVENDER/BLACK.



CROCHET CROPPED CARDIGAN LAVENDAR & HEAVY SILK CDC LONG SUIIT SKIRT BLACK.



SHORT SLEEVE BOYFRIEND SHIRT & SILK HEAVY CDC LONG SUIIT SKIRT BLACK.

CROCHET GRANDPA SHIRT LAVENDAR.





LEAF SHAPES IN THE SKY, AMAZON MARCH 2023.



CLIP SILK SIMPLE LOOSE DRESS BLACK.



CROCHET GRANDPA SHIRT LAVENDAR & 1996 DRESS CACAO.



1996 DRESS CACAO.



LOOK 1

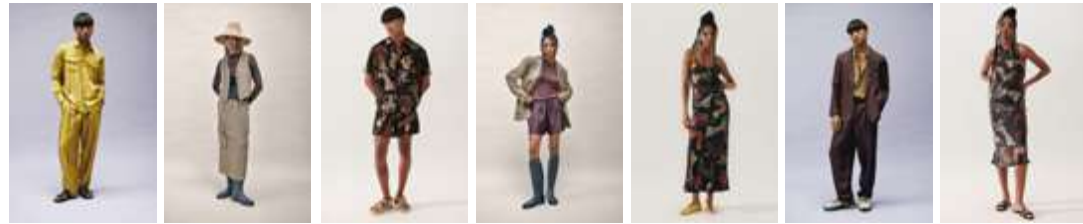
LOOK 2

LOOK 3

LOOK 4

LOOK 5

LOOK 6



LOOK 7

LOOK 8

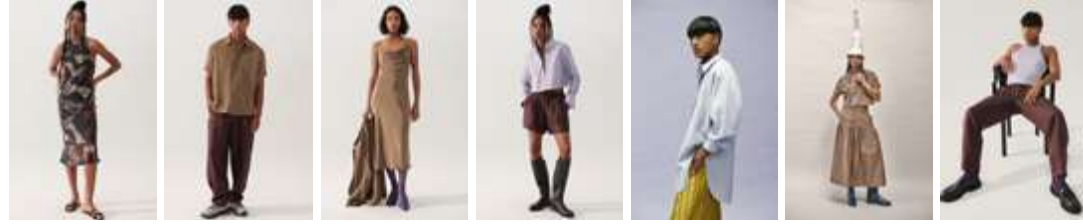
LOOK 9

LOOK 10

LOOK 11

LOOK 12

LOOK 13



LOOK 14

LOOK 15

LOOK 16

LOOK 17

LOOK 18

LOOK 19

LOOK 20



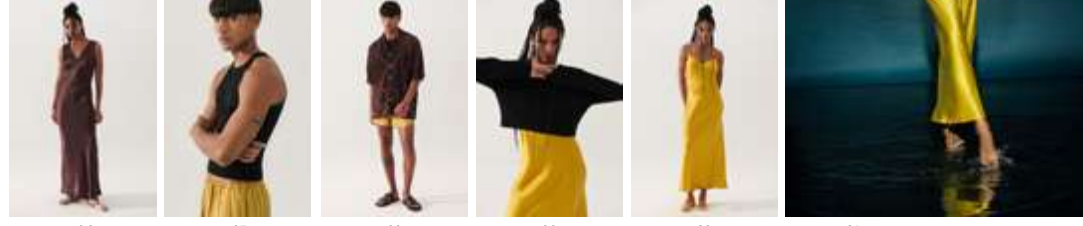
LOOK 21

LOOK 22

LOOK 23

LOOK 24

LOOK 25



LOOK 26

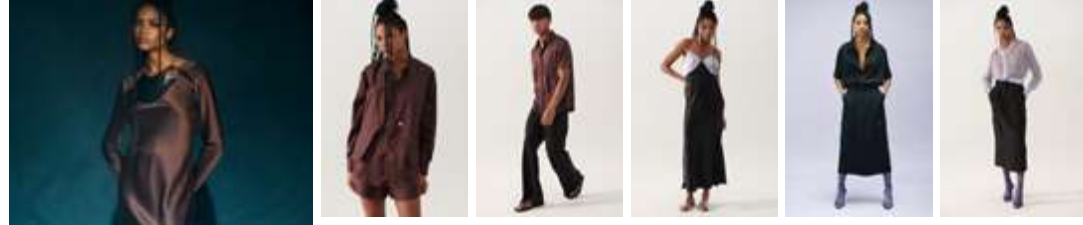
LOOK 27

LOOK 28

LOOK 29

LOOK 30

LOOK 31



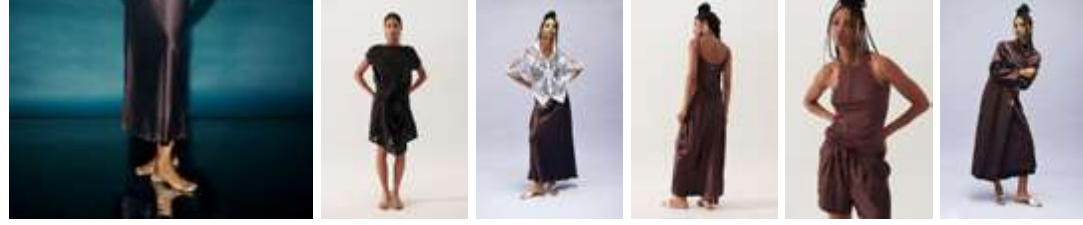
LOOK 32

LOOK 33

LOOK 34

LOOK 35

LOOK 36



LOOK 37

LOOK 38

LOOK 39

LOOK 40

LOOK 41

LOOK 42

TOTAL LOOKS - FULL COLLECTION

Inspired by Creative Director Katie Kolodinski's journey in the Amazon, Reflections of Nature is an homage to nature as it occurs, embodying its ever-changing colours and moods in a new light.

SILK LAUNDRY

NATURE / S

LABORATORY

RELEASE
TWO

004.23

LETTER FROM KATIE *cont.*

...Indigenous people represent 5% of the world's population; however, they protect 80% of its biodiversity. We had the pleasure of photographing Brazilian models Noah Alef and Larissa Joseph for part of this collection; both of whom are passionate about our planet's health. Noah is from the Pataxó indigenous tribe in Brazil and proudly wears his earring from home, embracing his indigenous heritage. His favourite print from the collection was the Jaguar print, as it is seen in their community as a protector of the environment and represents nature. Larissa had incredible energy, and she spends much of her time focused on reforestation projects. She and I have more in common than I imagined and I am so happy I could meet her.

For me, this collection is about making memories, facing fears, and choosing to live adventurously. It also highlights the importance of biodiversity and the people who dedicate their lives to preserving it. I would like you to hold a space for the environmental activists and indigenous people who have lost their lives or have been imprisoned for fighting for justice.

Katie K.

THE
REFLECTION
OF
THE
LAGOON.

004.23

Step into nature's biggest laboratory, a feast of textures, patterns and colours in harmony with nature. Release Two of this collection is an interplay of contrasts in different shades and prints inspired by creative director Katie Kolodinski's journey in the Amazon.



COTTON SILK LONG SLEEVE ROUND SHIRT LICHEN & BIAS CUT PANTS THYME.



STRAIGHT NECK DRESS LEOPARD.



SHORT SLEEVE BOYFRIEND SHIRT & LONG BIAS CUT SKIRT LEOPARD.

COTTON SILK CROPPED LONG SLEEVE SHIRT LICHEN.



CANOE CRUZANDO EL RIO CUYABENO, AMAZON ECUADOR 2023.



"For me, this collection is about making memories, facing fears, and choosing to live adventurously. It also highlights the importance of biodiversity and the people who dedicate their lives to preserving it..."

- KATIE KOLODINSKI

Exclusive limited-edition prints like Hot Lips, Snake Skin, & Leopard, act as expressions of nature's biodiversity and interconnectedness.



(left) 90'S SLIP DRESS LEOPARD *(right)* DECO ROULEAU DRESS LEOPARD.



COTTON SILK CROPPED CAMP SHIRT & 80'S SKIRT LEOPARD.

COTTON SILK CROPPED LONG SLEEVE SHIRT WHITE & WIDE BIAS PANTS W/ RAW EDGE.



SIENNA DRESS
HOT LIPS.



SILK JERSEY TANK LICHEN & LONG BIAS CUT SKIRT LEOPARD.



AMAZON TREKKING BOOT AND FERN.



THE LUNGS OF THE EARTH 2023.

New colourways like Lichen and Thyme are paired with versatile silhouettes to complement Release One, creating a harmony of layers and prints in warm and cool tones.



COTTON SILK LONG SLEEVE
ROUND SHIRT LICHEN, KNIT
CREWNECK & BIAS CUT
PANTS THYME.

SIENNA
DRESS LEOPARD.



(left) SHORT SLEEVE BOYFRIEND SHIRT & BIAS CUT PANTS THYME. *(right)* COTTON SILK LONG SLEEVE ROUND SHIRT LEOPARD & SHORT SLEEVE BIAS CUT DRESS THYME.

STRAIGHT NECK DRESS LEOPARD.



DECO ROULEAU
DRESS LEOPARD.



(left) ALPACA BOXY CARDIGAN NATURAL & DECO ROULEAU DRESS LEOPARD.

(right) VIRGIN ALPACA KNIT CREWNECK NATURAL & DECO ROULEAU DRESS LEOPARD.



STILL LIFE 2023.



1996 DRESS HOT LIPS.

SIENNA DRESS LEOPARD.



BOYFRIEND SHIRT & BIAS CUT PANTS THYME.



SILK RELAXED BLAZER & BIAS CUT PANTS THYME.





PSAROCOLIUS MONTEZUMA NESTS 2023.

"...I would like you to hold a space for the environmental activists and indigenous people who have lost their lives or have been imprisoned for fighting for justice."

- KATIE KOLODINSKI



COTTON SILK TWIST TOP & 80'S SKIRT LEOPARD.

MINI RAW EDGE SHIFT DRESS BLACK.



VIRGIN ALPACA KNIT CREWNECK THYME.



THE BIG 'G' CARDIGAN
BROWN & BIAS CUT PANTS
THYME.



SHORT SLEEVE BIAS DRESS THYME.

Discover an exclusive limited edition collection featuring refined silhouettes and limited-edition prints.



COTTON SILK ROUND SHIRT WHITE.

FINDING

HARMONY

IN

ALL THAT

IS RARE.



BOYFRIEND SHIRT & BIAS CUT PANTS THYME.

MESH LONG SLEEVE TOP
SNAKE SKIN & BIAS CUT
PANTS GARNET.



(left) STELLA DRESS GARNET. *(right)* 90'S SLIP DRESS GARNET.



SHORT SLEEVE BIAS DRESS SNAKE SKIN.



COTTON SILK LONG SLEEVE ROUND SHIRT WHITE.

STILL LIFE 2023.



SHORT SLEEVE BOYFRIEND SHIRT & BIAS CUT PANTS GARNET.



(left) STILL LIFE 2023. *(right)* STRAIGHT NECK DRESS SNAKE SKIN.



SHORT SLEEVE BOYFRIEND SHIRT & BIAS CUT PANTS SNAKE SKIN.



BOA IMPERATOR, 2023.

1996 DRESS
SNAKE SKIN.



DECO ROULEAU DRESS SNAKE SKIN.



SCOOP NECK DRESS
JAGUARS HAZELNUT.



SHORT SLEEVE
BOYFRIEND SHIRT HOT
LIPS & WIDE BIAS PANTS
W/ RAW EDGE.



"Psychotria elata aka Hot Lips is the catalyst that started this collection. The "lips" are actually leaves and in their centre blooms little flowers, attracting hummingbirds and butterflies. I knew it was rare, and I may not see it but after five days of walking in the Amazon, I stumbled upon it in disbelief. From there, the collection was born - a marvel at nature's harmony and resilience."
- KATIE KOLODINSKI

CLIP SILK SHORT SLEEVE BOYFRIEND SHIRT & BIAS CUT PANTS WHITE.



CLIP SILK SIMPLE LOOSE DRESS WHITE.

SIENNA DRESS BLACK.



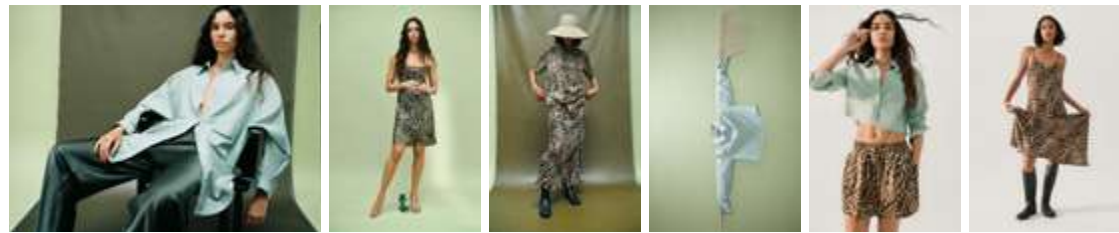
BIAS CUT CAMI SNAKE SKIN
& BIAS CUT PANTS JAGUARS
HAZELNUT.



(left) SHORT SLEEVE BOYFRIEND SHIRT & BIAS CUT PANTS JAGUARS HAZELNUT.
(right) BOYFRIEND SHIRT & LONG BIAS CUT SKIRT JAGUARS HAZELNUT.

MESH LONG SLEEVE TOP
HOT LIPS & WIDE BIAS
PANTS W/ RAW EDGE.





LOOK 1

LOOK 2

LOOK 3

LOOK 4

LOOK 5

LOOK 6



LOOK 7

LOOK 8

LOOK 9

LOOK 10

LOOK 11

LOOK 12

LOOK 13



LOOK 14

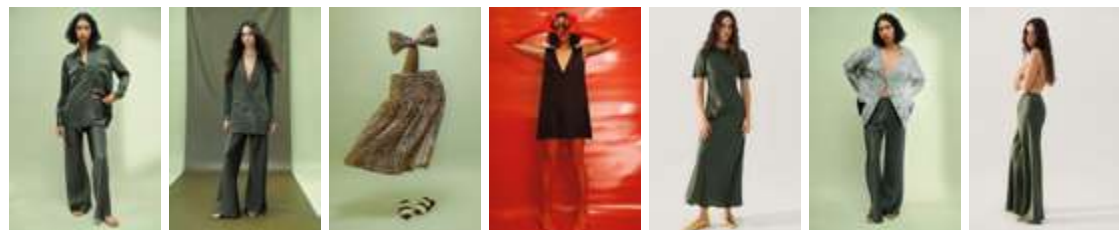
LOOK 15

LOOK 16

LOOK 17

LOOK 18

LOOK 19



LOOK 20

LOOK 21

LOOK 22

LOOK 23

LOOK 24

LOOK 25

LOOK 26



LOOK 27

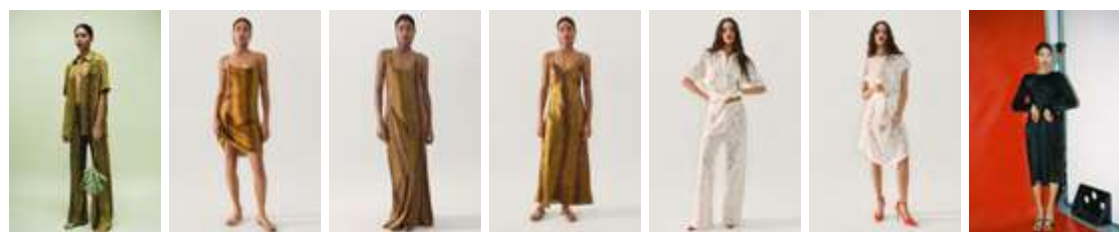
LOOK 28

LOOK 29

LOOK 30

LOOK 31

LOOK 32



LOOK 33

LOOK 34

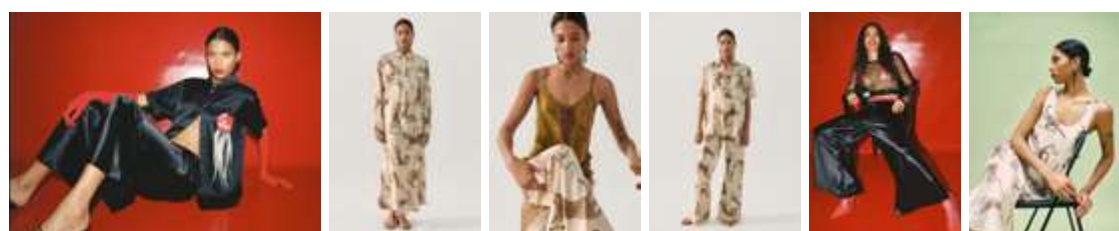
LOOK 35

LOOK 36

LOOK 37

LOOK 38

LOOK 39



LOOK 40

LOOK 41

LOOK 42

LOOK 43

LOOK 44

LOOK 45

Total looks - Full Collection

A collection inspired by the Amazon the lungs of the Earth. Reflections of Nature is an homage to nature as it occurs, embodying its ever-changing colours and moods in a new light.