

SILK LAUNDRY

LUNAR NEW YEAR

AN EXCLUSIVE CAPSULE COLLECTION DEDICATED TO CHANNELLING
PROSPERITY AND GOOD FORTUNE FOR THE YEAR AHEAD.

LUNAR NEW YEAR

Year of the Dragon

In celebration of the Year of the Dragon, Silk Laundry has collaborated with German-based designer Ruby Lee to craft a capsule that embodies the essence of this powerful symbol—representing nobility, honour, luck, and success.

This Lunar New Year capsule stands as a testament to our commitment to exceptional quality, offered in a limited edition that captures the spirit of 2024's auspicious zodiac. The dragon, a beacon of power and success, takes centre stage in this collaboration.

Infusing her creativity with a global perspective, Ruby Lee has translated the essence of the dragon into an exclusive print that shapes five silk pieces: the short sleeve boyfriend shirt, 90s slip dress, bias-cut pants, mesh top and money pouch.

In honour of the dragon's fiery symbolism, each piece has been reimagined in a fiery shade of red, infusing the collection with a sense of boldness and vibrancy that aligns perfectly with the spirit of the Lunar New Year.



YEAR OF THE DRAGON

Short Sleeve Boyfriend Shirt

The short sleeve boyfriend shirt is cut in a relaxed unisex fit and features a button down front and utility pockets for versatile wear. Crafted in 100% silk, best paired with the Bias Cut Pants.



YEAR OF THE DRAGON

90s Slip Dress

Silk Laundry's founding piece. Cut on the bias for a flattering fit, featuring adjustable straps and a mid length hemline for functional dressing that pairs well with evolving styles.



YEAR OF THE DRAGON

Bias Cut Pants

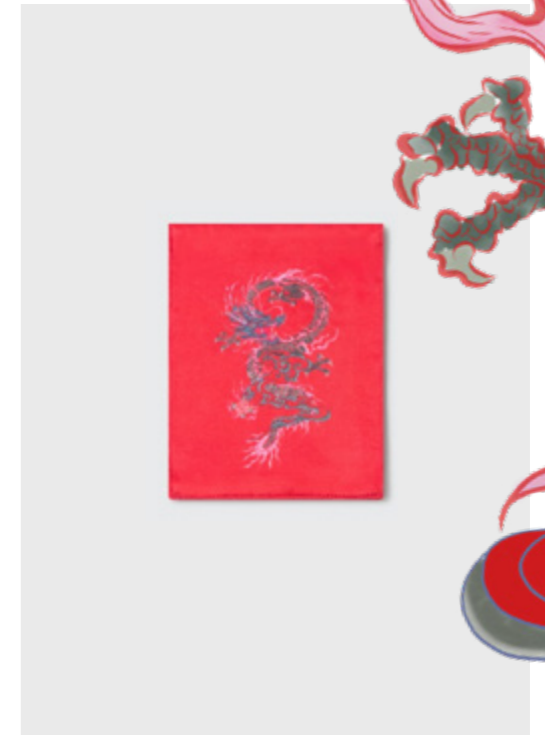
Bias Cut pants in 100% silk with a glossy finish that fall into a fluid, slight flare. The elasticated waistband sits above the hip pulling in to highlight the waistline and elongate the leg.



YEAR OF THE DRAGON

Silk Mesh Top

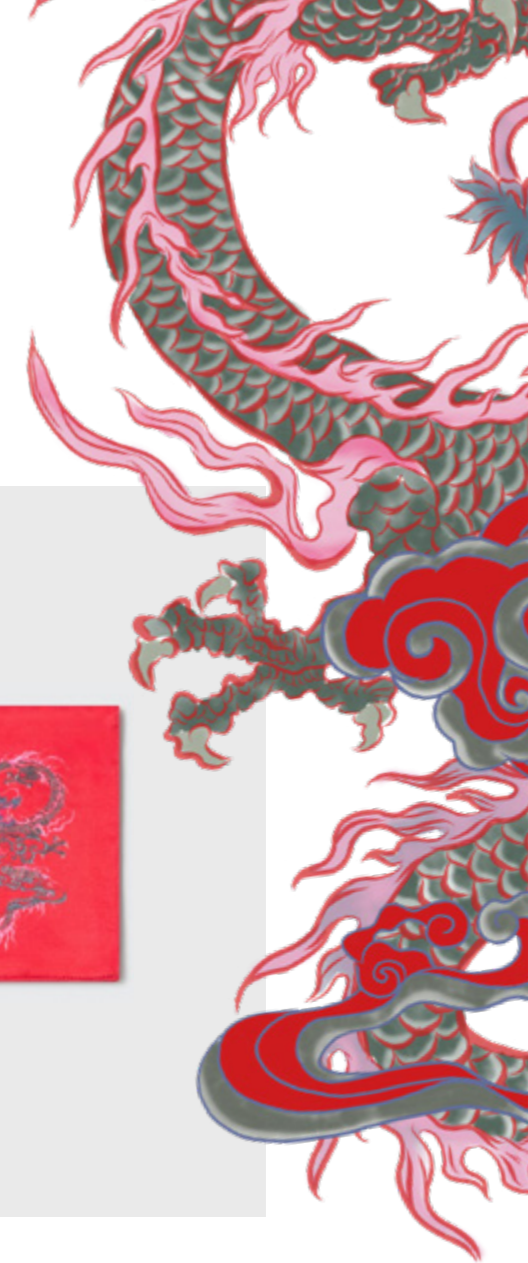
A wardrobe staple with elevated details, our Mesh Long Sleeve is anything but basic. Made from a breathable second-skin sheer mesh, where it solo or layered.



YEAR OF THE DRAGON

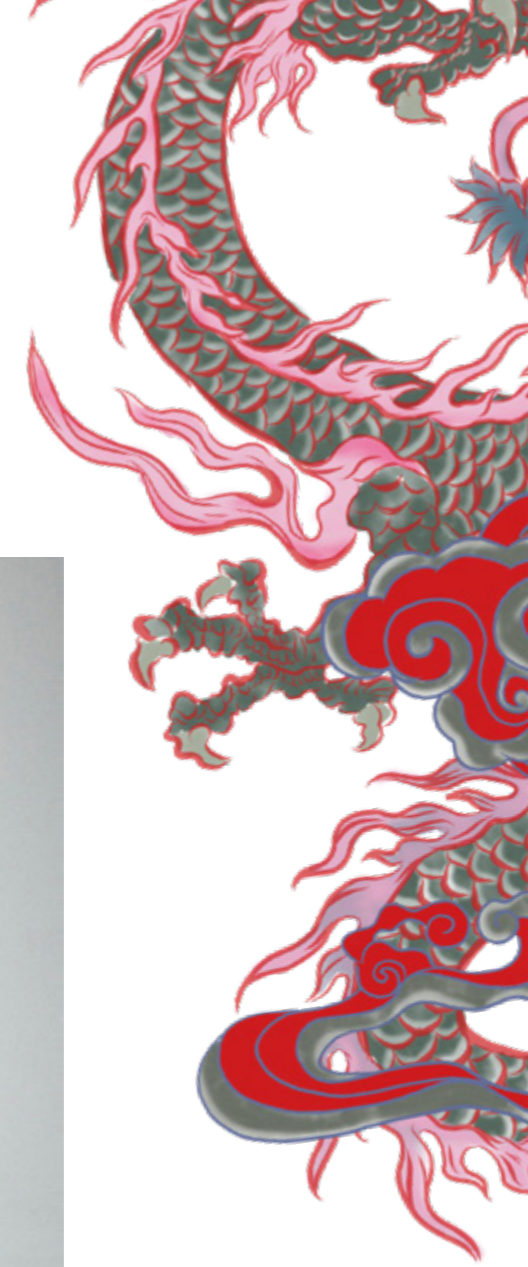
Money Pouch

A traditional silk money pouch, versatile for travel, jewellery, or coins. Exclusively crafted for the Year of the Dragon capsule collection featuring Ruby Lee's exclusive print.





90s Slip Dress Year of the Dragon. (Left) Short Sleeve Boyfriend Shirt and 90s Slip Dress Year of the Dragon.



SILK LAUNDRY

ORDER FROM THE YEAR OF THE DRAGON COLLECTION

DELIVERY EARLY JANUARY 2024

JOOR

www.jooraccess.com/silklaundry

GLOBAL SALES ENQUIRIES
wholesale@silklaundry.com

HEAD OF SALES NORTHERN HEM.
cristina@silklaundry.com

SOUTHERN HEM.
ella@silklaundry.com