

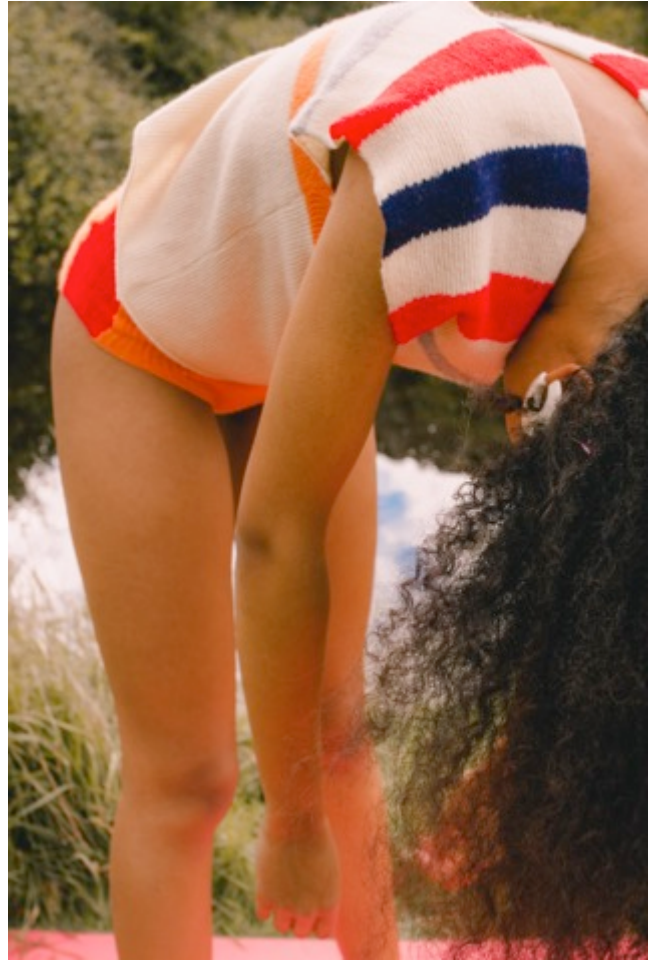


Spring summer 2019

**ROS DUKE**







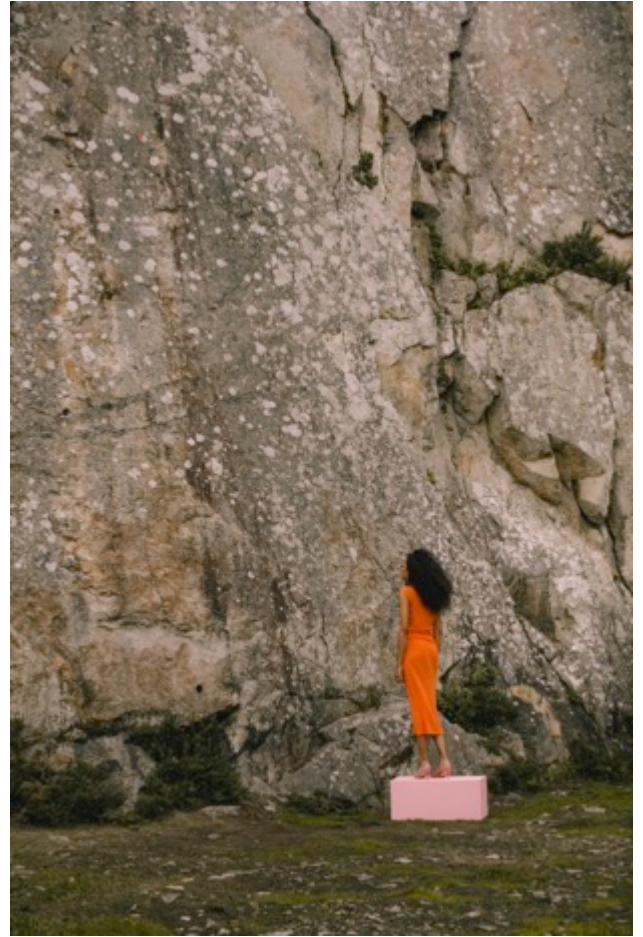






























# ROS DUKE



**Spring | Summer 2019**

**Photographer: Jose Galang @arman.jose.galang**

**Model: Marwa Noelle @marwa.noelle @assetsmodels**

**Set Design: Ciara O'Donovan @ciaraodonovan**

**Hair and Make up: Beca O'Neill @becaoneill**

**Look 1: Orange Jigger long sleeve, Pink Gingham skirt**

**Look 2: Stripe top, Orange go-faster pants**

**Look 3: Orange Speedy top, Orange Rib skirt**

**Look 4: Navy Rib batwing sweater, Orange Rib skirt**

**Look 5: Pink Rib shell sweater, Orange Rib skirt**

**Look 6: Pink Gingham top, Pink Gingham skirt**

**Look 7: Grey essential sweater, Stripe skirt**

**Look 8: Stripe top, Stripe skirt**

**Look 9: Pink Gingham top, Pink Gingham skirt**

Cashmere designer Ros Duke creates sumptuously cool knitwear which is modern and timeless for the way we live now. She is known for playing with surface texture and pattern to create highly individual collections full of unique and exceptional pieces. Using the finest quality cashmere yarn from Loro Piana, every piece is designed in Ireland, and knitted by small skilled groups of creative knitters and technicians, who push the boundaries within cashmere knitting techniques.

Every piece is made with care and detail, and is designed with a strong purpose in mind, to be worn and loved for a long time.

[www.rosduke.com](http://www.rosduke.com)  
[info@rosduke.com](mailto:info@rosduke.com)